



**THE NORTHWEST  
SEAPORT ALLIANCE**  
*Gateway to Solutions*

# Alaska Update

Presented by  
Tong Zhu, Chief Commercial Officer & Chief Strategy Officer  
Scott Pattison, Sr. Manager, Container Business Development  
Karen Matthias, NWSA Alaska Representative

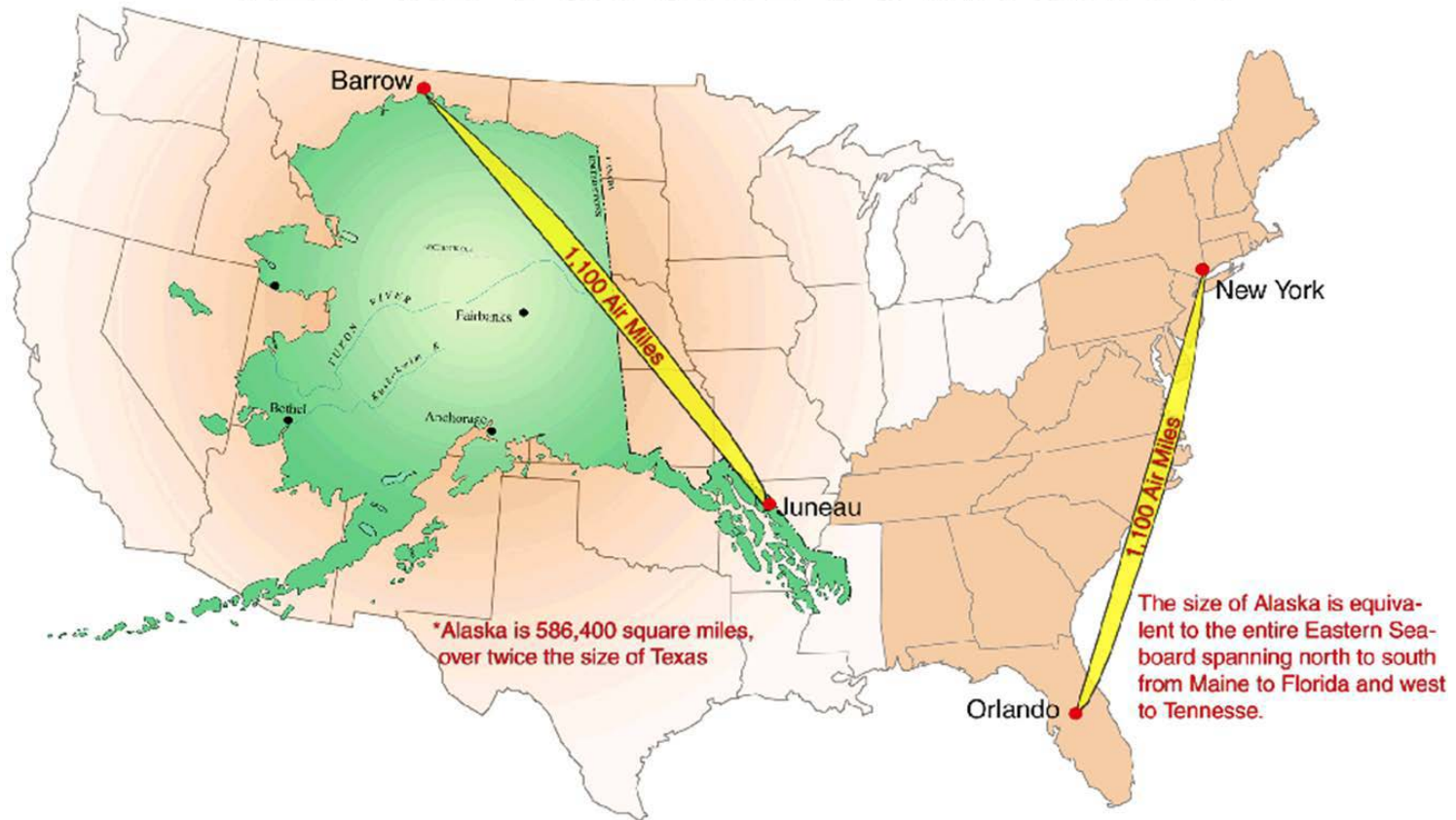
# Overview

- **NWSA's Alaska Trade**
- **History and Economic Impact**
- **Key Partners**
- **Outlook**
- **NWSA Role**



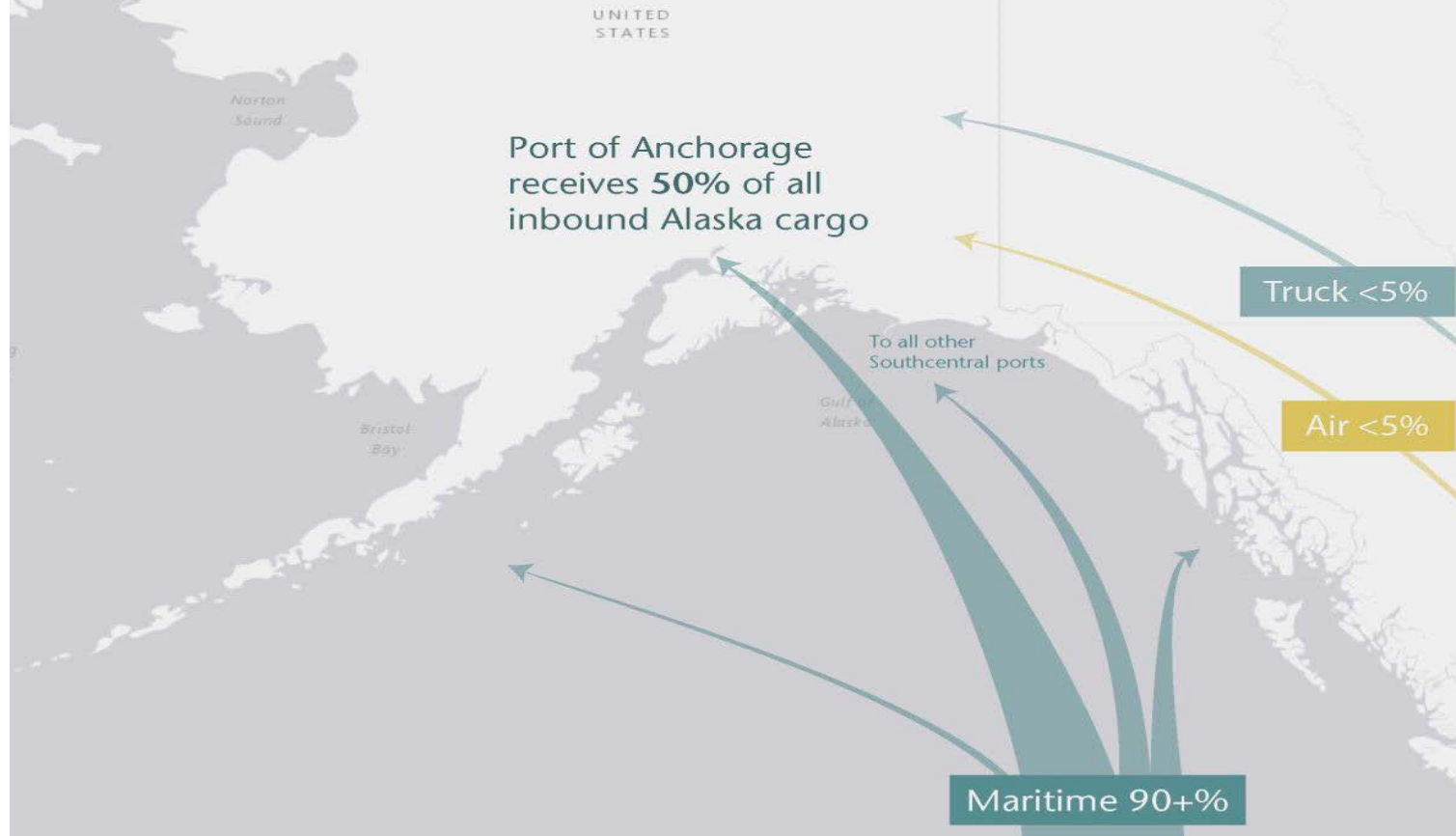
# ALASKA: 586,400 Sq. Miles; 737,000 People

## SIZE AND DISTANCE COMPARISON



# Alaska Depends on Shipping

Total inbound Alaska freight: 3.3 million tons  
Total inbound Port of Anchorage: 1.66 million tons

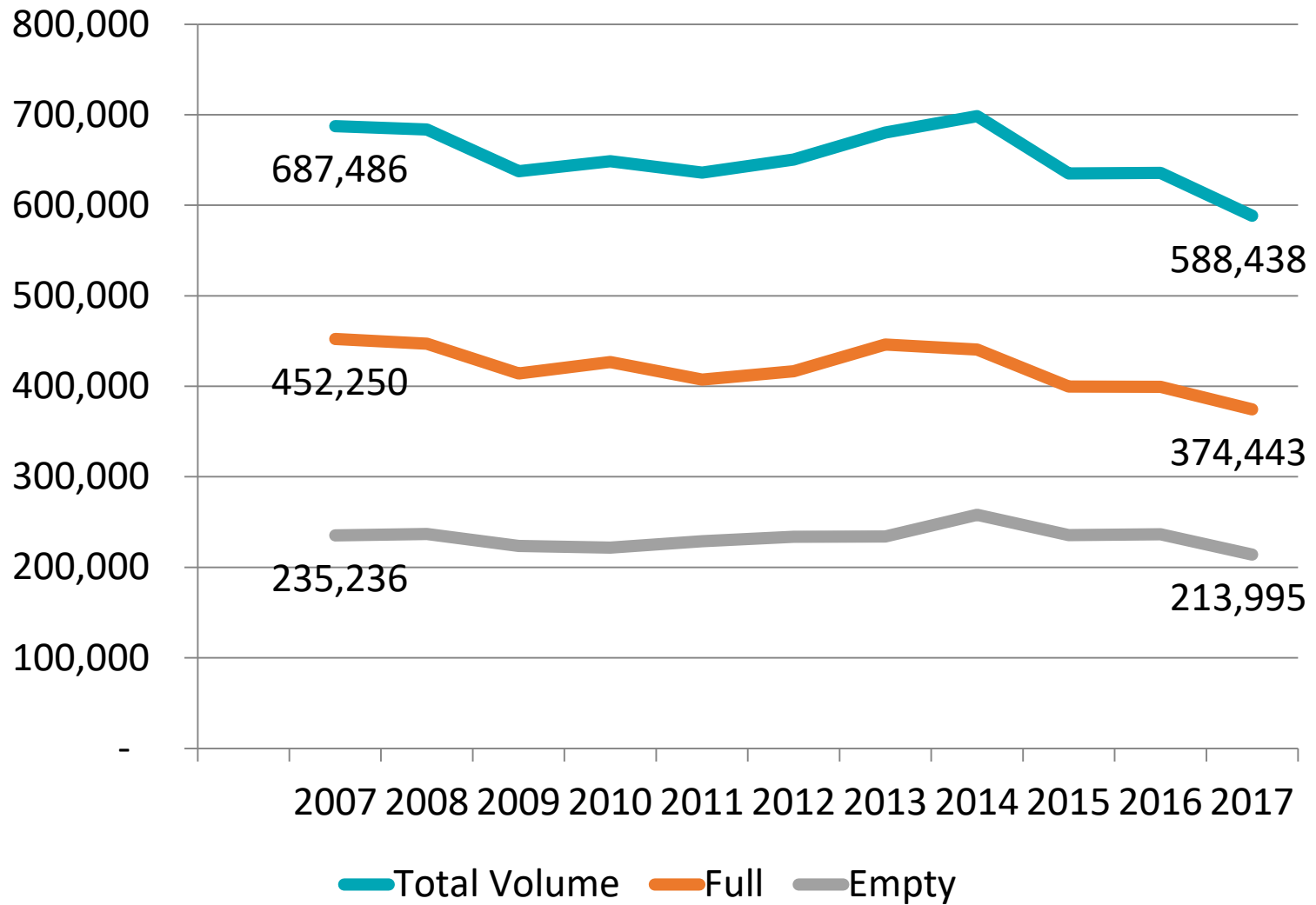


# Alaska Volumes 2007-2017

TEUs

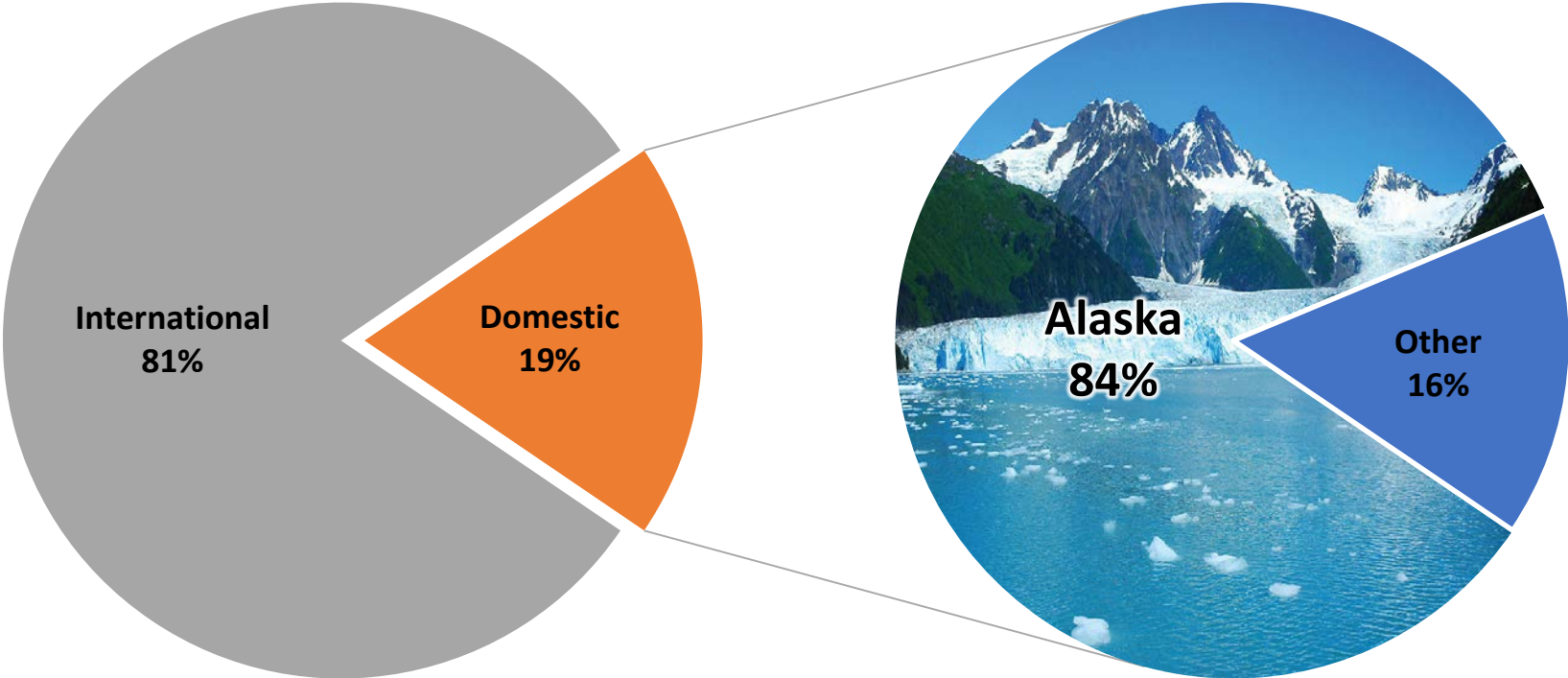


THE NORTHWEST  
SEAPORT ALLIANCE



THE NORTHWEST  
SEAPORT ALLIANCE

# 2017 Total Container Volume



# Long History of Trade and Connections



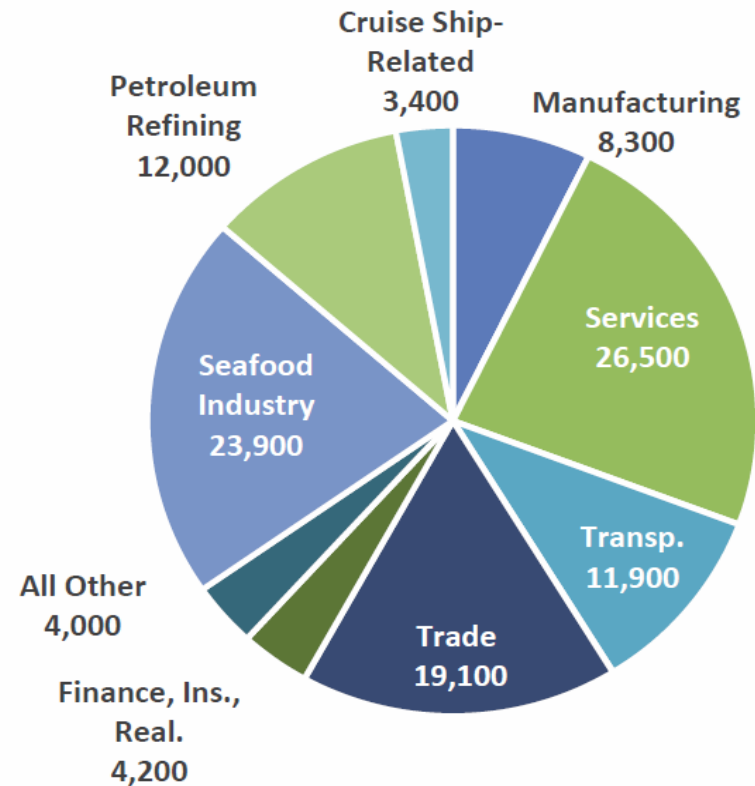


# Alaska's Economic Impact on Puget Sound

2013 (most recent available data)

- Export Value: \$5.4 billion
- AK-related jobs: 113,000
- Total labor earnings: \$6.2 billion
- AK-related cargo/freight activity:
  - 5,500 jobs
  - \$450 million in labor earnings

Alaska-Related Jobs in Puget Sound,  
By Sector, 2013



Source: *Ties that Bind* Report, McDowell Group, 2015





# Alaska's Economic Impact on NWSA

**\$17.25 million**

**2017 Marine Terminal revenue from Alaska carriers\***

\*Consolidated data for NWSA marine cargo terminals only. **Excludes:** industrial land, dry warehouse, cold storage, fishing vessels, marinas, seafood processors, mooring dolphins, cruise, SeaTac airport and related Alaska-dependent revenues to the NWSA, Port of Seattle or Port of Tacoma.



# NWSA's Key Partners



# Key Partners – Matson Alaska

- Matson has third highest TEU volume in the NWSA
- Three Container Ships serving Alaska
- Twice weekly service to Anchorage & Kodiak;
- Weekly service to Dutch Harbor
- **Added stack scrubbers to reduce emissions**



# Key Partners – TOTE Maritime Alaska

- Two ships – Ro-Ro service
- Twice weekly service to Anchorage
- **Converting to LNG**





# Key Partners – Alaska Marine Lines

- More than 200 ports of call in Alaska
- Weekly rail barge to Central + twice weekly to Southeast
- Seasonal service to Western/Arctic
- Feeder service for Matson, TOTE, APL
- **Tug/barges** - most fuel-efficient mode of transport



# Who Uses NWSA Carriers?



# Outlook: Challenges

- Distance from markets, small population
- Port of Alaska (Anchorage) structural problems
- Alaska's recession
- Dutch Harbor – Expansion to bypass PNW





# Outlook: Key Sectors

- Oil and Gas
- Mining
- Seafood
- Tourism
- Military/Federal Government



# Outlook: Opportunities

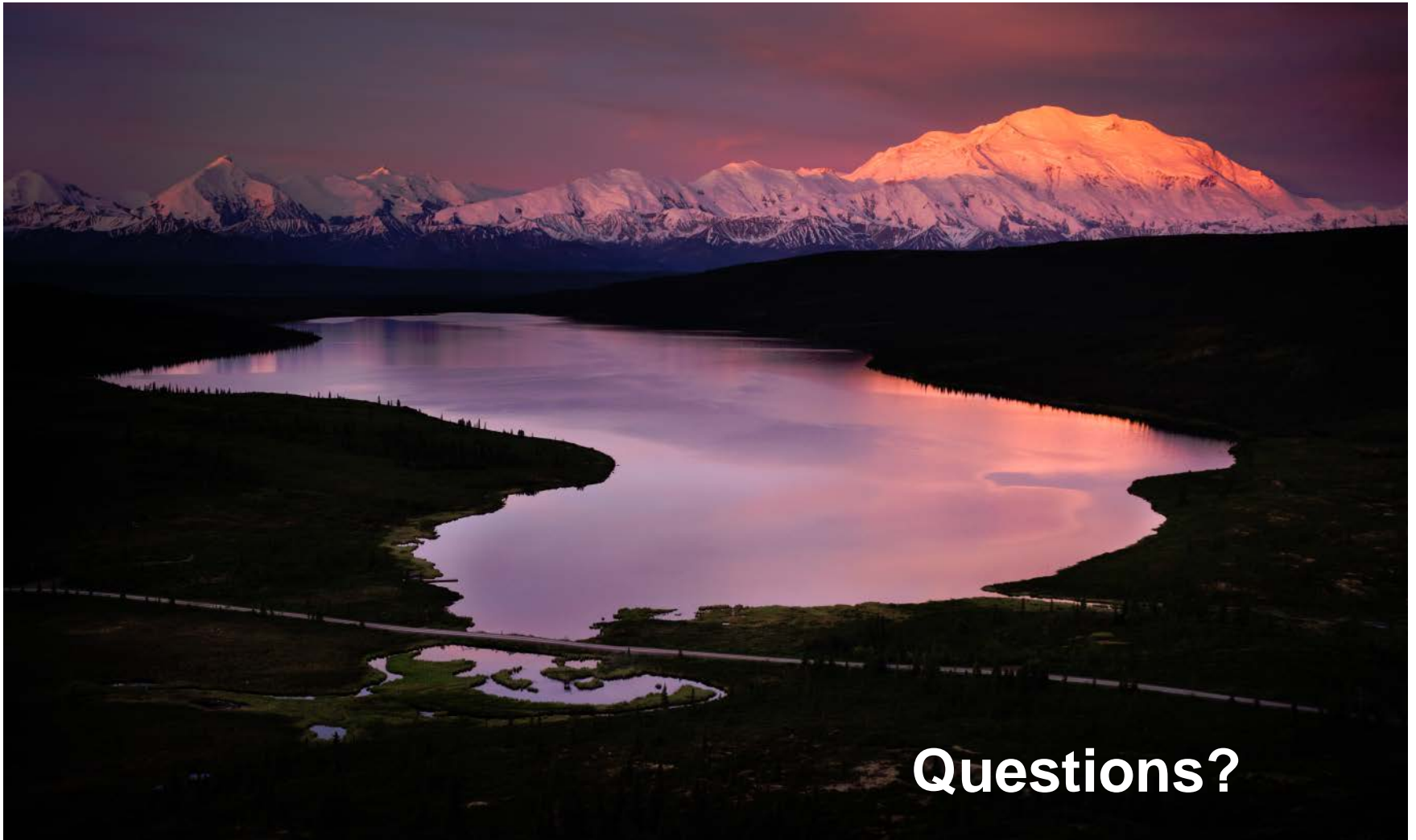
- Seafood – Wild and sustainable
- Tourism – Stable and growing
- Donlin Gold mine project ~ \$7 Bn
- Natural gas pipeline & LNG export ~\$43 Bn
- Military/Federal Government – Stable/growing
- Alaska Native Corporations - Growing





## NWSA Role

- Provide efficient marine terminals
- Partnership in marketing our gateway
- Support interdependent initiatives
  - e.g. Advocate for Port of Alaska dock replacement
- Recognize cyclical nature of Alaska economy
- Position for next major opportunity



**Questions?**

[www.nps.gov](http://www.nps.gov)

